

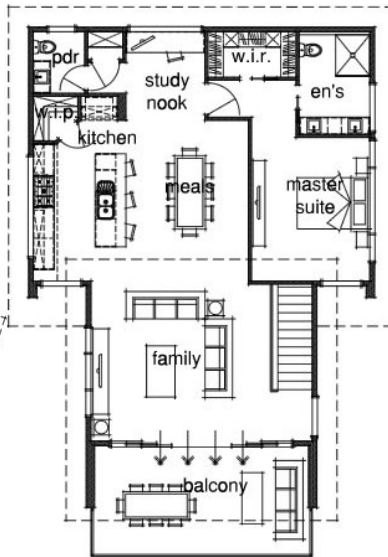
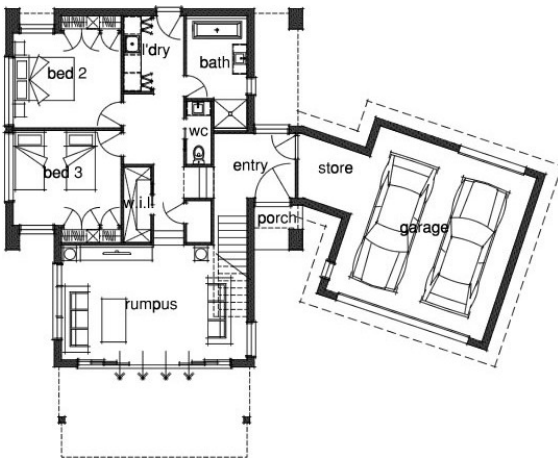
HOME & LAND PACKAGE

Lot 7 Holdings Place, Anglesea



Ground Floor:

First Floor:



Package Price: \$670,000
Home Design: Custom Design

Total Home Area: 279.21 (30.05SQS)
Width of Home: 18.76m
Length of Home: 15.61m
Lot Size: 561m²

INCLUSIONS LIST:

- ✓ Personalised Service
- ✓ Quality Local Trades
- ✓ Carpet & Extensive Floor Tiling
- ✓ Designer Joinery Throughout
- ✓ 900mm Westinghouse Appliances
- ✓ Contemporary Plumbing Fixtures

Call Simon McClure - 0422 295 235 for more information

**"Innovative Approach, Exceptional Service and a home you are proud of..
That's Our Signature Promise!"**

Package Price includes home type with Signature Classic Inclusions & land priced at \$280,000. Site costs excluded, subject to: soil test, feature survey and developer design approval. Pricing can be subject to change. Revision Date 21/12/2011 — Supersedes all previous revisions



126 Fyans Street
South Geelong Vic 3220
Phone 5229 2929
Fax 5229 2930

admin@signaturehomes.net.au
www.signaturehomes.net.au



SIGNATURE
Homes Geelong