

HOME & LAND PACKAGE

4 Lyrebird Avenue, Ocean Grove



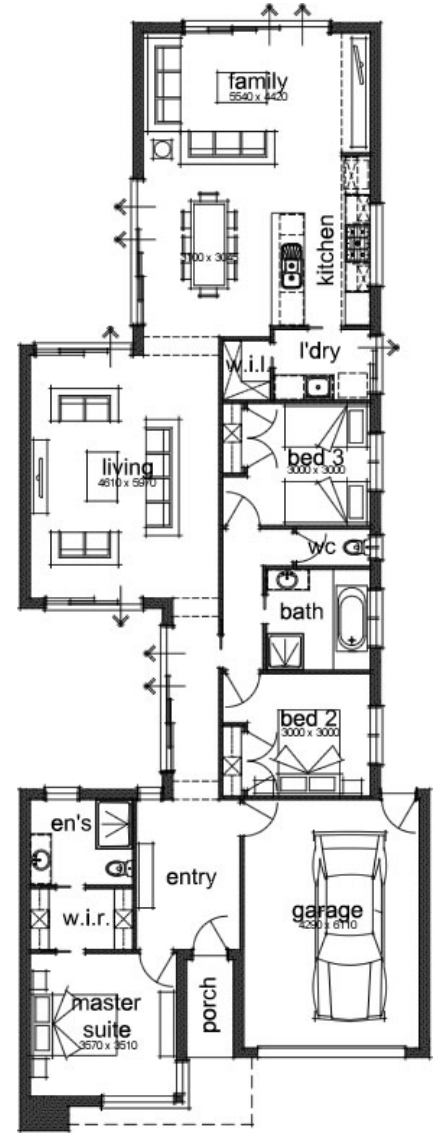
Package Price: \$550,000
Home Design: Custom Design

Total Home Area: 199.22m² (21.44SQS)
Width of Home: 10.00m
Length of Home: 26.63m
Lot Size: 420m²

INCLUSIONS LIST:

- ✓ Personalised Service
- ✓ Quality Local Trades
- ✓ Carpet & Extensive Floor Tiling
- ✓ Designer Joinery Throughout
- ✓ 900mm Westinghouse Appliances
- ✓ Contemporary Plumbing Fixtures

Call Simon McClure - 0422 295 235 for more information



"Innovative Approach, Exceptional Service and a home you are proud of...
That's Our Signature Promise!"

Package Price includes home type with Signature Classic Inclusions & land. Site costs excluded, subject to: soil test, feature survey and developer design approval.
Pricing can be subject to change. Revision Date 08/11/2011 — Supersedes all previous revisions



126 Fyans Street
South Geelong Vic 3220
Phone 5229 2929
Fax 5229 2930

admin@signaturehomes.net.au
www.signaturehomes.net.au

 **SIGNATURE**
Homes Geelong