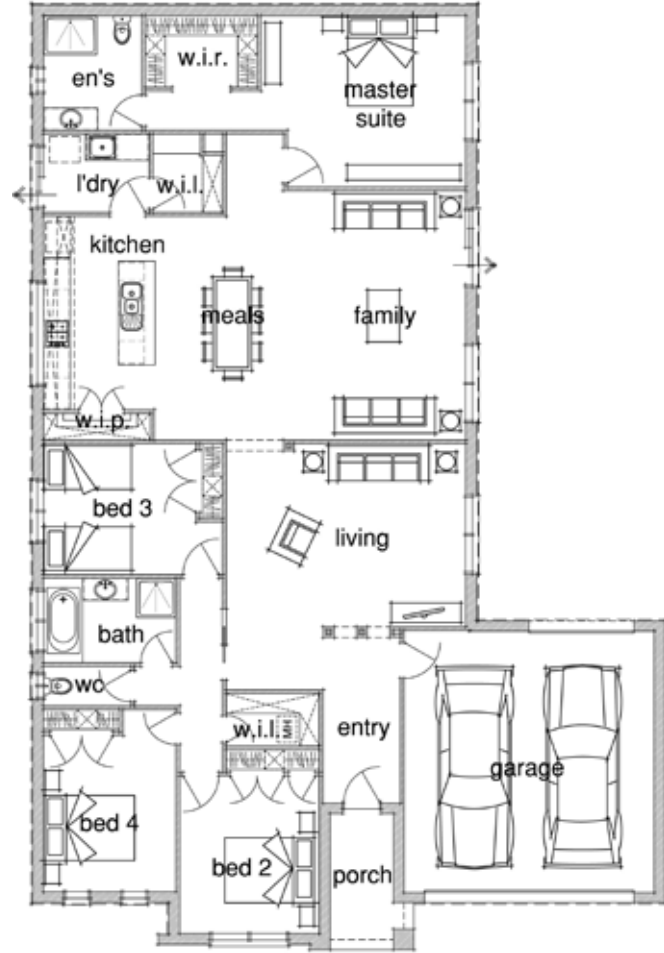


HOME & LAND PACKAGE

Lot 51 Central Walk Estate, Drysdale



Package Price: \$437,100
Home Design: Brampton 26

Total Home Area: 243.91m² (26SQS)
Width of Home: 14.51m
Length of Home: 21.59m
Lot Size: 600m²

INCLUSIONS LIST:

- ✓ Personalised Service
- ✓ Quality Local Trades
- ✓ Carpet & Extensive Floor Tiling
- ✓ Designer Joinery Throughout
- ✓ 900mm Westinghouse Appliances
- ✓ Contemporary Plumbing Fixtures

Call Simon McClure - 0422 295 235 for more information

“Innovative Approach, Exceptional Service and a home you are proud of...
That’s Our Signature Promise!”

Package Price includes home type with Signature Classic Inclusions & land. Site costs excluded, subject to: soil test, feature survey and developer design approval.
Pricing can be subject to change. Revision Date 03/10/2011 – Supersedes all previous revisions



126 Fyans Street
South Geelong Vic 3220
Phone 5229 2929
Fax 5229 2930

admin@signaturehomes.net.au
www.signaturehomes.net.au

