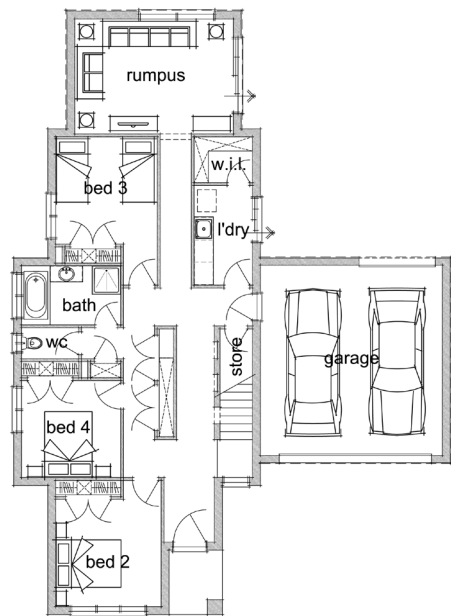


HOME & LAND PACKAGE

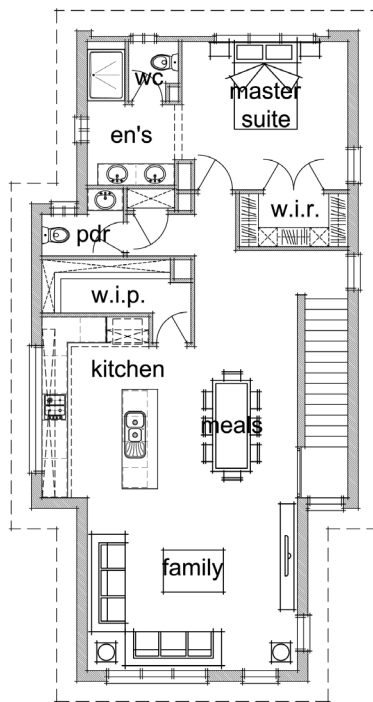
Lot 543 Westlakes Blvd, Lara



Ground Floor:



First Floor:



Package Price: \$556,330
Home Design: Glenhaven 29

Total Home Area: 271.05m² (29.2SQS)
Width of Home: 13.79m
Length of Home: 19.07m
Lot Size: 553m²

INCLUSIONS LIST:

- ✓ Personalised Service
- ✓ Quality Local Trades
- ✓ Carpet & Extensive Floor Tiling
- ✓ Designer Joinery Throughout
- ✓ 900mm Westinghouse Appliances
- ✓ Contemporary Plumbing Fixtures

Call Simon McClure - 0422 295 235 for more information

**"Innovative Approach, Exceptional Service and a home you are proud of..
That's Our Signature Promise!"**

Package Price includes home type with Signature Classic Inclusions & land. Site costs excluded, subject to: soil test, feature survey and developer design approval. Pricing can be subject to change. Revision Date 12/09/2011 — Supersedes all previous revisions



126 Fyans Street
South Geelong Vic 3220
Phone 5229 2929
Fax 5229 2930

admin@signaturehomes.net.au
www.signaturehomes.net.au



SIGNATURE
Homes Geelong