

HOME & LAND PACKAGE

Lot 32 Central Walk Estate, Drysdale



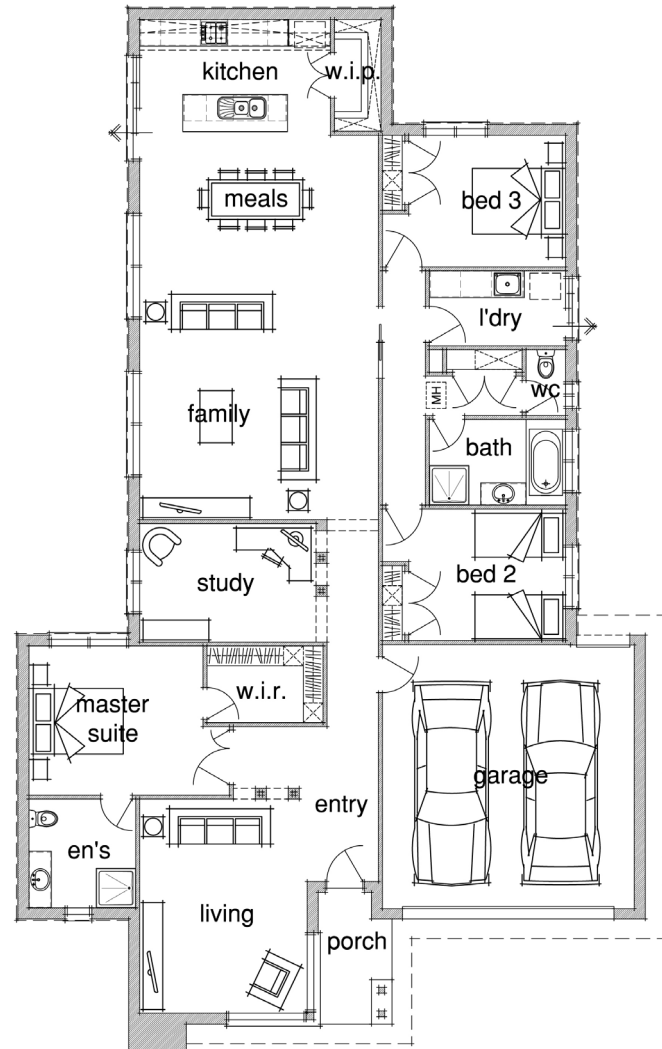
Package Price: \$429,500
Home Design: Charlton 26

Total Home Area: 241.14m² (26SQS)
Width of Home: 14.27m
Length of Home: 23.15m
Lot Size: 651m²

INCLUSIONS LIST:

- ✓ Personalised Service
- ✓ Quality Local Trades
- ✓ Carpet & Extensive Floor Tiling
- ✓ Designer Joinery Throughout
- ✓ 900mm Westinghouse Appliances
- ✓ Contemporary Plumbing Fixtures

Call Simon McClure - 0422 295 235 for more information



"Innovative Approach, Exceptional Service and a home you are proud of...
That's Our Signature Promise!"

Package Price includes home type with Signature Classic Inclusions & land. Site costs excluded, subject to: soil test, feature survey and developer design approval.
Pricing can be subject to change. Revision Date 25/09/2011 — Supersedes all previous revisions



126 Fyans Street
South Geelong Vic 3220
Phone 5229 2929
Fax 5229 2930

admin@signaturehomes.net.au
www.signaturehomes.net.au

 **SIGNATURE**
Homes Geelong