

# HOME & LAND PACKAGE

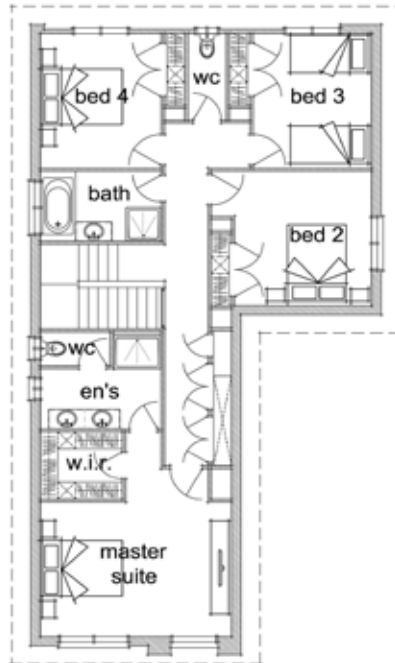
Lot 1347 Twilight Way, Leopold



Ground Floor:



First Floor:



**Package Price:** \$531,600  
**Home Design:** Evandale 33

**Total Home Area:** 308.74m<sup>2</sup> (33.23SQS)  
**Width of Home:** 12.95m  
**Length of Home:** 20.15m  
**Lot Size:** 600m<sup>2</sup>

#### INCLUSIONS LIST:

- ✓ Personalised Service
- ✓ Quality Local Trades
- ✓ Carpet & Extensive Floor Tiling
- ✓ Designer Joinery Throughout
- ✓ 900mm Westinghouse Appliances
- ✓ Contemporary Plumbing Fixtures

**Call Simon McClure - 0422 295 235 for more information**

"Innovative Approach, Exceptional Service and a home you are proud of..  
That's Our Signature Promise!"

Package Price includes home type with Signature Classic Inclusions & land. Site costs excluded, subject to: soil test, feature survey and developer design approval. Pricing can be subject to change. Revision Date 01/09/2011 — Supersedes all previous revisions



126 Fyans Street  
South Geelong Vic 3220  
Phone 5229 2929  
Fax 5229 2930

admin@signaturehomes.net.au  
www.signaturehomes.net.au

 **SIGNATURE**  
Homes Geelong